



# HXK III Polyclonal Antibody

|                           |   |
|---------------------------|---|
| <b>Catalog No</b>         | YP-Ab-14779   |
| <b>Isotype</b>            | IgG   |
| <b>Reactivity</b>         | Human;Rat;Mouse;  |
| <b>Applications</b>       | WB;IHC;IF;ELISA   |
| <b>Gene Name</b>          | HK3   |
| <b>Protein Name</b>       | Hexokinase-3  |
| <b>Immunogen</b>          | The antiserum was produced against synthesized peptide derived from human Hexokinase-3. AA range:811-860  |
| <b>Specificity</b>        | HXK III Polyclonal Antibody detects endogenous levels of HXK III protein.   |
| <b>Formulation</b>        | Liquid in PBS containing 50% glycerol, 0.5% BSA and 0.02% sodium azide.   |
| <b>Source</b>             | Polyclonal, Rabbit,IgG  |
| <b>Purification</b>       | The antibody was affinity-purified from rabbit antiserum by affinity-chromatography using epitope-specific immunogen.   |
| <b>Dilution</b>           | WB: 1/500 - 1/2000. IHC: 1/100 - 1/300. ELISA: 1/5000.. IF 1:50-200   |
| <b>Concentration</b>      | 1 mg/ml   |
| <b>Purity</b>             | ≥90%  |
| <b>Storage Stability</b>  | -20°C/1 year  |
| <b>Synonyms</b>           | HK3; Hexokinase-3; Hexokinase type III; HK III  |
| <b>Observed Band</b>      | 99kD  |
| <b>Cell Pathway</b>       | cell,mitochondrion,cytosol,   |
| <b>Tissue Specificity</b> | Blood,Liver,Spleen,   |
| <b>Function</b>           | catalytic activity:ATP + D-hexose = ADP + D-hexose 6-phosphate.,domain:The N- and C-terminal halves of this hexokinase show extensive sequence similarity to each other. The catalytic activity is associated with the C-terminus while regulatory function is associated with the N-terminus.,enzyme regulation:Hexokinase is an allosteric enzyme inhibited by its product Glc-6-P.,miscellaneous:In vertebrates there are four major glucose-phosphorylating isoenzymes, designated hexokinase I, II, III and IV (glucokinase).,online information:Hexokinase entry,pathway:Carbohydrate metabolism; hexose metabolism.,similarity:Belongs to the hexokinase family.,subunit:Monomer., |
| <b>Background</b>         | Hexokinases phosphorylate glucose to produce glucose-6-phosphate, the first step in most glucose metabolism pathways. This gene encodes hexokinase 3. Similar to hexokinases 1 and 2, this allosteric enzyme is inhibited by its product glucose-6-phosphate. [provided by RefSeq, Apr 2009],   |



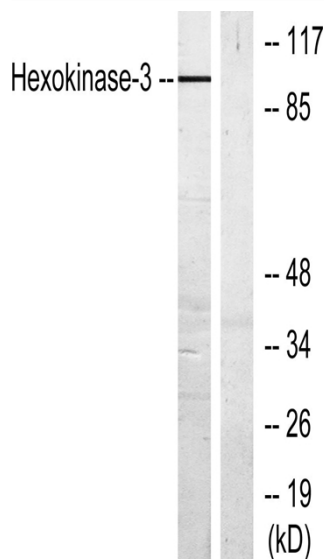
### matters needing attention

Avoid repeated freezing and thawing!

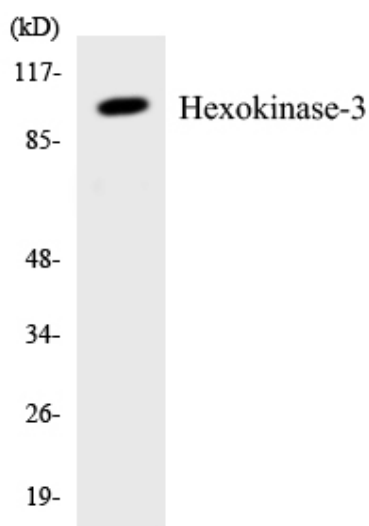
### Usage suggestions

This product can be used in immunological reaction related experiments. For more information, please consult technical personnel.

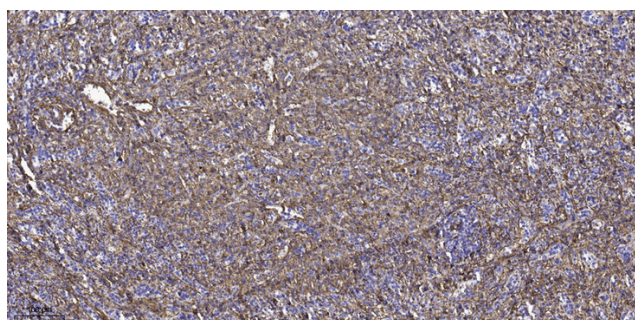
## Products Images



Western blot analysis of lysates from Jurkat cells, treated with insulin 0.01U/ml 15', using Hexokinase-3 Antibody. The lane on the right is blocked with the synthesized peptide.



Western blot analysis of the lysates from COLO205 cells using Hexokinase-3 antibody.



Immunohistochemical analysis of paraffin-embedded human spleen tissue. 1, primary Antibody was diluted at 1:200 (4° overnight). 2, Sodium citrate pH 6.0 was used for antigen retrieval (>98°C, 20min). 3, Secondary antibody was diluted at 1:200